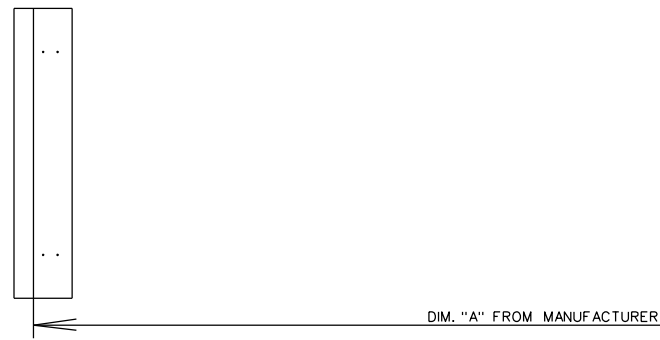
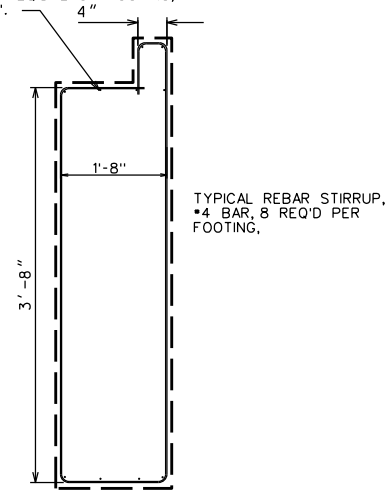


TYPICAL BRIDGE SECTION
NOT TO SCALE

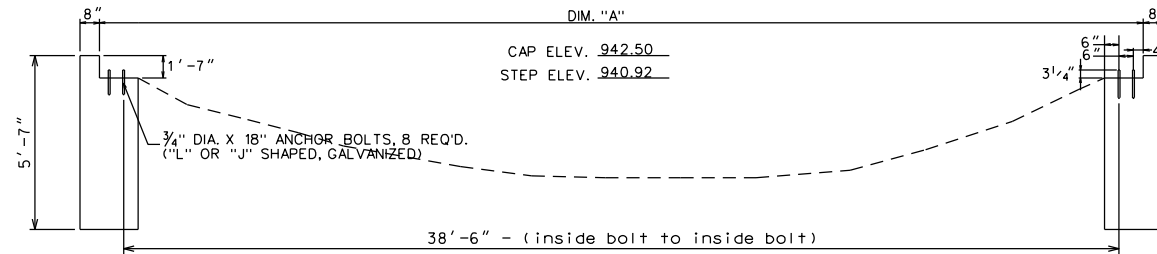


FOOTING PLAN
NOT TO SCALE

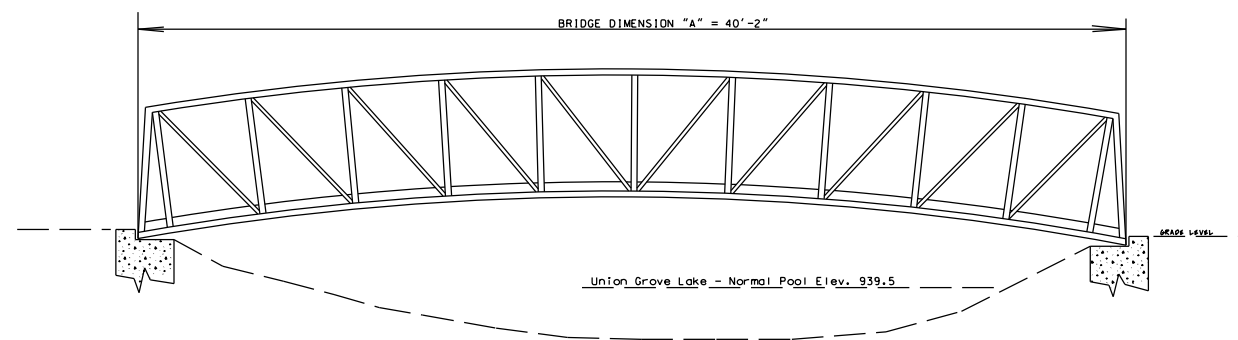
•4 REBAR, 10 REQ'D EACH FOOTING, LENGTH 11'-8".



FOOTING REINFORCEMENT
NOT TO SCALE



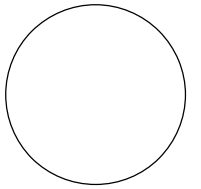
TYPICAL FOOTING ELEVATION
NOT TO SCALE



BRIDGE ELEVATION
NOT TO SCALE

- NOTES:**
- Contractor shall furnish and install an Express Truss bridge with wood decking as manufactured by Contech Construction Products, Inc., Aledandria, Minnesota or approved equal. All necessary hardware is incidental to bridge bid item.
 - Contractor shall verify anchor bolt spacings with bridge supplier prior to construction of the footings.
 - Excavation and Fill quantities necessary for construction of footings shall be incidental work.
 - Concrete shall be class "C" structural, 4,000 PSI @ 28 days.

CONSULTANT:



IOWA DEPARTMENT OF NATURAL RESOURCES

ENGINEERING SERVICES - WALLACE BUILDING
502 E. 9TH ST., DES MOINES, IA 50319-0034



TYPICAL CROSS SECTIONS AND DETAILS

TRAIL BRIDGE CONSTRUCTION FOR:

UNION GROVE STATE PARK

TAMA COUNTY

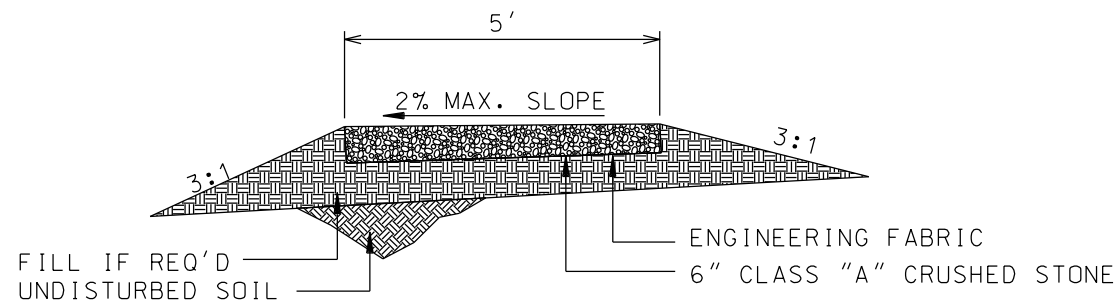
NO.	BY	REVISION

DRAWN BY: PROJECT NUMBER:
18-05-86-01

CHK'D BY: DATE:

SHEET No:

B.01

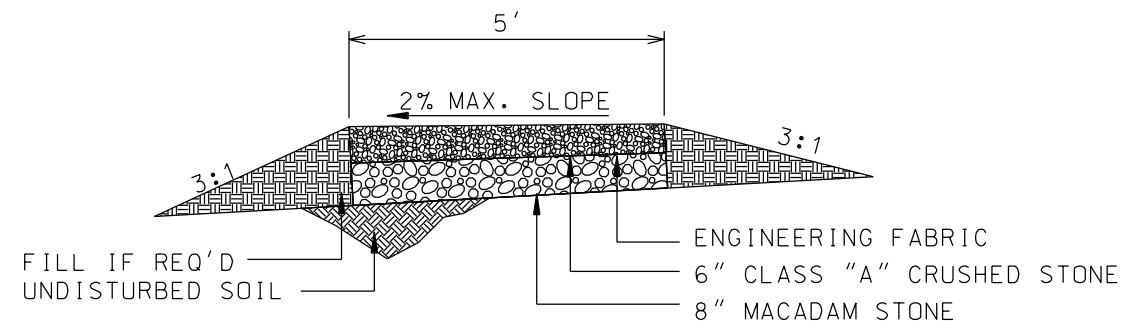


NOTES:

BLADING AND SHAPING OF ROUTES TO BE APPROVED BY THE ENGINEER, AND ARE TO BE INCIDENTAL TO THE GRANULAR SURFACING BID ITEM.

Type 1 Trail

NOT TO SCALE



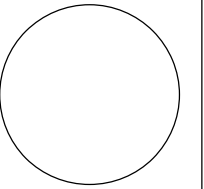
NOTES:

BLADING AND SHAPING OF ROUTES TO BE APPROVED BY THE ENGINEER, AND ARE TO BE INCIDENTAL TO THE GRANULAR SURFACING BID ITEM.

Type 2 Trail

NOT TO SCALE

CONSULTANT:



**IOWA DEPARTMENT OF
NATURAL RESOURCES**

ENGINEERING SERVICES - WALLACE BUILDING
502 E. 9TH ST., DES MOINES, IA 50319-0034



TYPICAL CROSS SECTIONS AND DETAILS

TRAIL BRIDGE CONSTRUCTION FOR:

UNION GROVE STATE PARK

TAMA COUNTY

NO.	BY	REVISION

DRAWN BY: PROJECT NUMBER:
18-05-86-01

CHK'D BY: DATE:

SHEET No:

B.02

